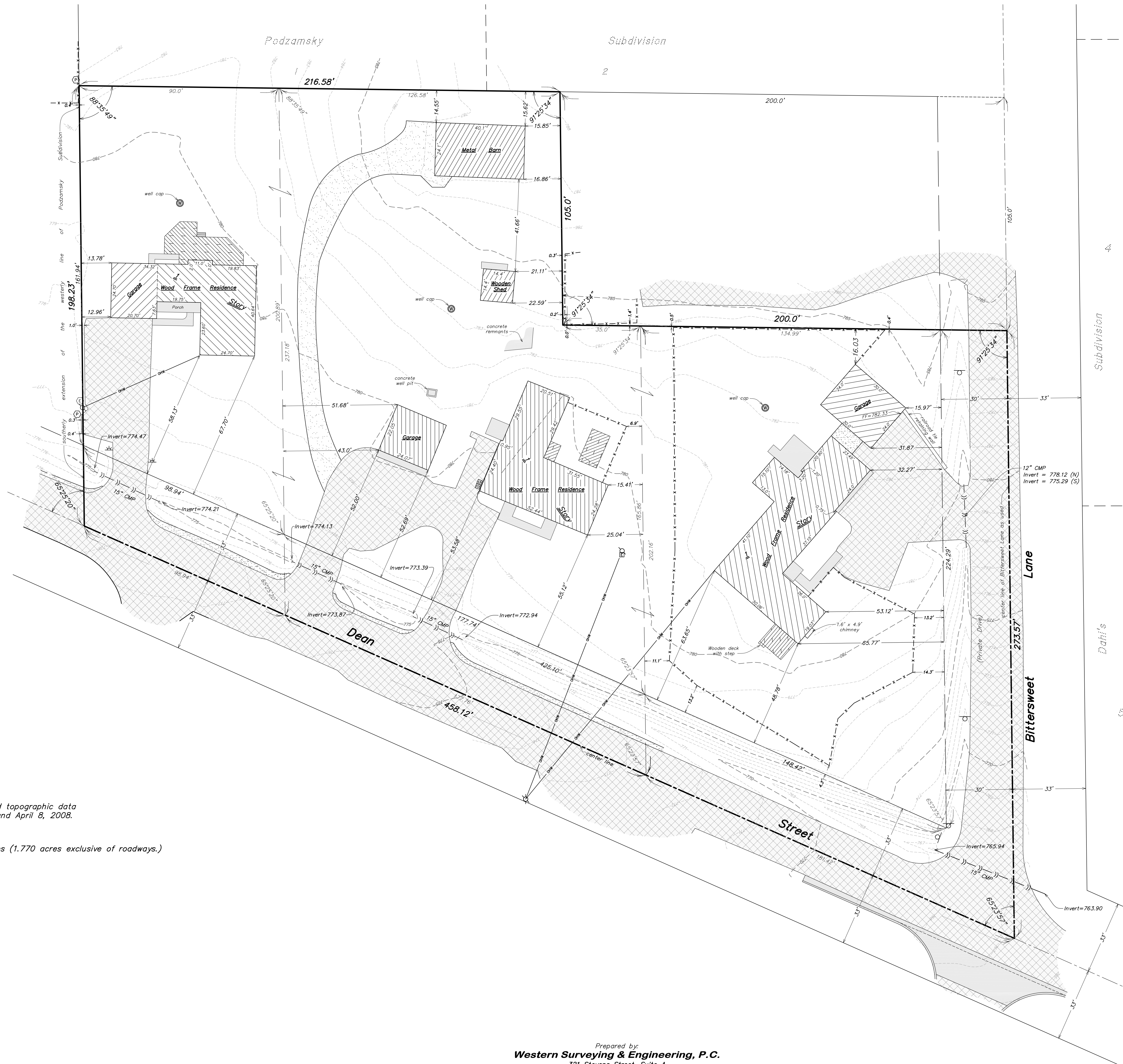
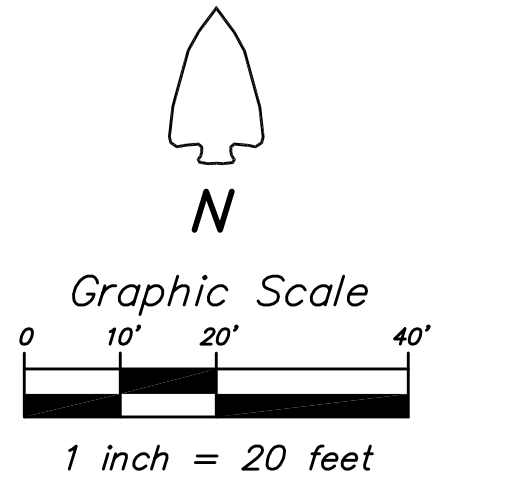


# Topographic Exhibit

## Part of the Northeast Quarter of Section 29-40-8 St. Charles Township Kane County Illinois



- Indicates traffic sign
- Indicates utility pole
- Indicates gas meter
- Indicates electric meter
- Indicates telephone pedestal
- Indicates electric pedestal
- Indicates ground light
- Indicates utility pole
- Indicates center line of fence (offset exaggerated to show direction)
- Indicates 15" CMP
- Indicates CMP
- Indicates overhead wires
- Indicates asphalt surface
- Indicates concrete surface
- Indicates gravel surface
- Indicates wooden deck
- Indicates contour line

Note: Graphic depiction of some symbol locations have been exaggerated for visual clarity.

Exhibit reflects combined topographic data obtained April 7, 2006 and April 8, 2008.

Site contains 2.276 acres (1.770 acres exclusive of roadways.)

Prepared by:  
**Western Surveying & Engineering, P.C.**  
321 Stevens Street, Suite A  
Geneva, Illinois 60134  
(630) 845-0600 (630) 845-0601 Fax  
Copyright © 2008, Western Surveying & Engineering, P.C.

Ordered by & Prepared for:  
Westwood Homes

August 14, 2008  
File Name: Combined Drawn by: KJT/MTZ/SLL  
Directory: CAD7\403006 Job No.: 403.006